



In-Mar Solutions

3011 S. Ruby Ave.
Gonzales, LA 70737
Ph: (225) 644-7063
Fax: (225) 644-7046
Email: info@inmarsolutions.com
Web: www.inmarsolutions.com

INSTALLATION & OPERATION MANUAL

IM-1591-051-24V WASH SYSTEM

WARNING: A suitably qualified person should perform all installation and maintenance. All electrical wiring should be carried out in accordance with relevant regulations. Ensure all products are correctly earthed and all connections are made in accordance with the wiring diagram. Non-compliance may result in damage, malfunction or personal injury. Before commencing any installation or maintenance work, ensure that the electrical supply is disconnected.

CONTENTS

CONTENTS	2
TYPE 1591 WASH SYSTEM.....	3
Wash system description.	3
Technical information Pump.....	3
Wash system and dimensions IM-1591-051-24V.....	4
Wash Pump	5
DOCUMENTATION	6

TYPE 1591 WASH SYSTEM

Wash system description.

The type 1591 wash system is a 5 liter wash bottle including mounting bracket and one (1) self-venting submersible pumps.

The system is design for small sized vessels with a maximum of 2 wipers.

The pumps can be operated with a Cole Hersee switch or with the Wynn controllers and control systems.

Technical information Pump.

Venting Submersible Pump

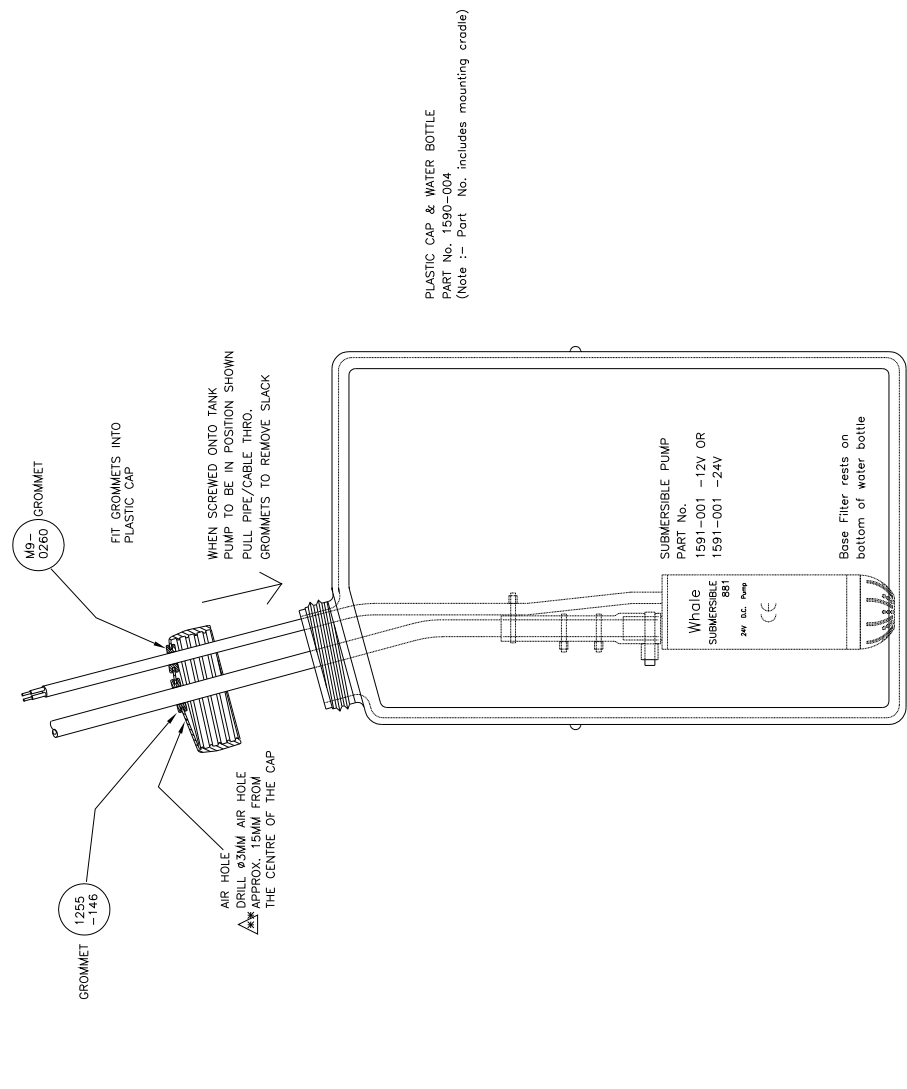
- Self-venting design eliminates air locking
- Designed to be dropped into a water tank
- Simple, compact and low-cost pump
- Ideal for two to three hot/cold mixer faucet outlets
- Suitable for dual purpose manual/electric system
- Inexpensive way to update a manual to an electric system
- Pumps fresh water, saltwater and diesel
- Low power consumption
- Very quiet
- Low power consumption

Description Product Code:	Submersible Pump GP8825
Voltage:	24V DC
Recommended Fuse Size:	3 amp automotive
Hose Connections:	To suit 10 mm or 13 mm (3/8" or 1/2") Bore Flexible Hose
Connection to Quick Connect 15 mm:	Use WX1511 Adaptor and then WX1504
Materials:	ABS plastic, stainless steel, Nitrile, PP

Performance Data			
Head:	Flow rate per minute and current draw		
0 m (0 ft)	11 ltrs (3 US gals) 2.8 amps	11 ltrs (3 US gals) 2.8 amps	13.4 ltrs (3 1/2" US gals) 6 amps
1 m (3 ft)	9.8 ltrs (2.6 US gals) 2.7 amps	9.8 ltrs (2.6 US gals) 2.7 amps	12.4 ltrs (3.3 US gals) 4 amps
3 m (9 ft)	8.75 ltrs (2.3 US gals) 2.7 amps	8.75 ltrs (2.3 US gals) 1.35 amps	10.55 ltrs (2.8 US gals) 5.8 amps

Wash system and dimensions IM-1591-051-24V

ENGINEERING CHANGE
 ENGINEER-----
 CONTROLLED
 17/02/2010 11:54 AM



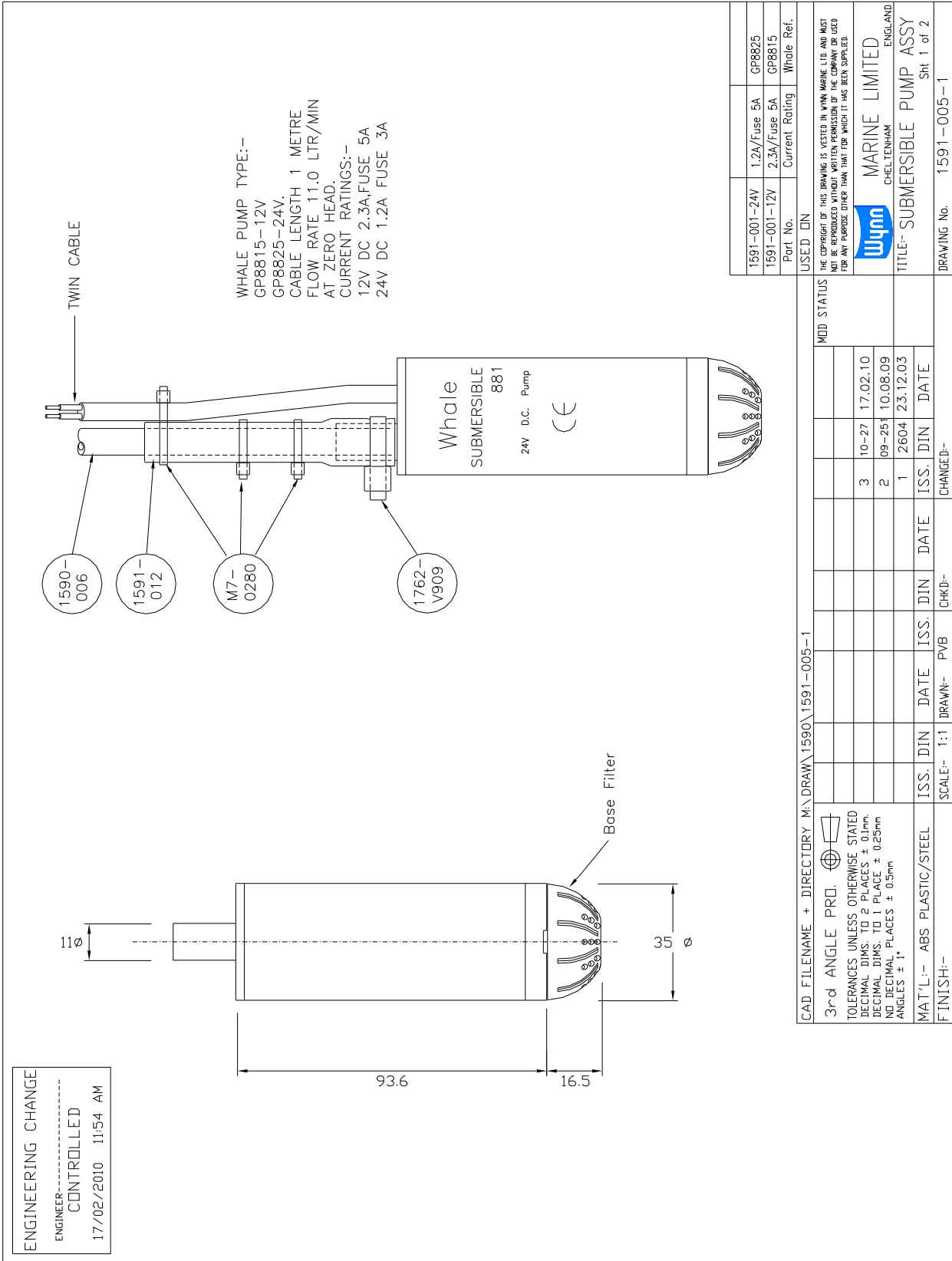
Part No. 1591-005-12	12Volt
Part No. 1591-005-24	24Volt
USED IN	
THE COPYRIGHT OF THIS DRAWING IS VESTED IN WYNN MARINE LTD. AND MUST NOT BE REPRODUCED WITHOUT WRITTEN PERMISSION OF THE COMPANY OR USED FOR ANY PURPOSE OTHER THAN THAT FOR WHICH IT HAS BEEN SUPPLIED.	
Wynn MARINE LIMITED CHELTENHAM ENGLAND	
TITLE:- SUBMERSIBLE PUMP ASSY	
Sht 2 of 2	
DRAWING No. 1591-005-2	

CAD FILENAME + DIRECTORY M:\ DRAW\1590\1591-005-2		MOD STATUS	
ISS.	DIN	DATE	DATE
		3	10-27 17.02.10
		2	09-25 10.08.09
		1	2604 23.12.03
ISS.	DIN	DATE	DATE
ISS.	DIN	DATE	DATE
SCALE:- 1:1	DRAWN:- PVB	CHKD:-	CHANGE:-
FINISH:-			

3rd ANGLE PRO.

TOLERANCES UNLESS OTHERWISE STATED
 DECIMAL DIMS. TO 2 PLACES ± 0.1mm
 DECIMAL DIMS. TO 1 PLACE ± 0.25mm
 NO DECIMAL PLACES ± 0.5mm
 ANGLES ± 1°
 MAT'L:-
 FINISH:-

Wash Pump



DOCUMENTATION

Whilst every effort is made to provide accurate information in good faith, no responsibility can be accepted by Wynn for inaccuracies and Wynn reserves the right to alter and amend specifications and designs without prior notice in line with our policy of continued improvement.

Spares Parts

To enable technical troubleshooting and ordering of spare parts, this manual should be kept in a safe place on board. It is also advisable to keep one set of spare parts on board for emergency use. Please contact Wynn directly or your local distributor / service centre for all order requirements.

Maintenance Schedules

Plan your maintenance work according to the schedule in this manual.

Our Commitment

We are committed to a 10 year product support programme. This ensures that any spare part will be available for any wiper at least 10 years after its purchase. It is strongly recommended that only genuine replacement parts manufactured by WYNN be used. This will guarantee that only suitable materials have been used and will ensure interchangeability of parts.

Quality and Testing

We are committed to the principles of Total Quality Management, ISO 9000. We manufacture our range of marine products to the highest standard and quality. We therefore maintain an ongoing schedule of product improvement and testing. To help us sustain such standards we maintain a salt-water test rig on which our products are taken, at random from the production line, and subjected to 3,000 hour continuous testing. We are sure you will receive many years trouble-free service from your Wynn product and hope you find this information pack comprehensive.

Guarantee

All Wynn equipment is tested before despatch from our works. The Windscreen Wiper System supplied has a 1 year warranty period provided the installation of the system and the subsequent maintenance is in accordance with the installation/maintenance instructions.

We cannot accept any responsibility for the installation of equipment, or damage to the equipment during installation, or normal wear and tear. The guarantee is negated if the equipment is not installed strictly observing the instructions set out in this manual, or not maintained as specified.

The Wiper System is very reliable but to ensure its continued smooth running we recommend that the following guidelines are adhered to:-

Monthly

- Check for wear on all parts subject to friction
- Visual inspection should be made of the blades to ensure that they are still in good condition and replace as soon as there are signs of wear or damage

Annually

- It is recommended that the blades are changed every 12 months

After the Wiper System has been operating in severe weather conditions it is advisable to thoroughly check the unit for signs of wear or damage.

This warranty excludes the wiper blades which are a consumable item and any replacements that are detailed in the manual as part of any regular maintenance requirement.

This guarantee is expressly in lieu of all other guarantees expressed or implied and of all other obligations of liabilities on our part, and we neither assume nor authorise any other person to assume for us any other liability in connection with the sale of our equipment. Faulty equipment must be returned, carriage paid, to our works for examination.



In-Mar Solutions

3011 S. Ruby Ave.
Gonzales, LA 70737
Ph: (225) 644-7063
Fax: (225) 644-7046
Email: info@inmarsolutions.com
Web: www.inmarsolutions.com