



**In-Mar Systems**  
**In-Mar Solutions**

Phone: (225) 644-7063

Fax: (225) 644-7046

Web: [www.inmarsystems.com](http://www.inmarsystems.com)










STRAIGHT LINE

# Type 1850

## External Pantograph Wiper

Ideal for heavy duty usage in medium sized applications

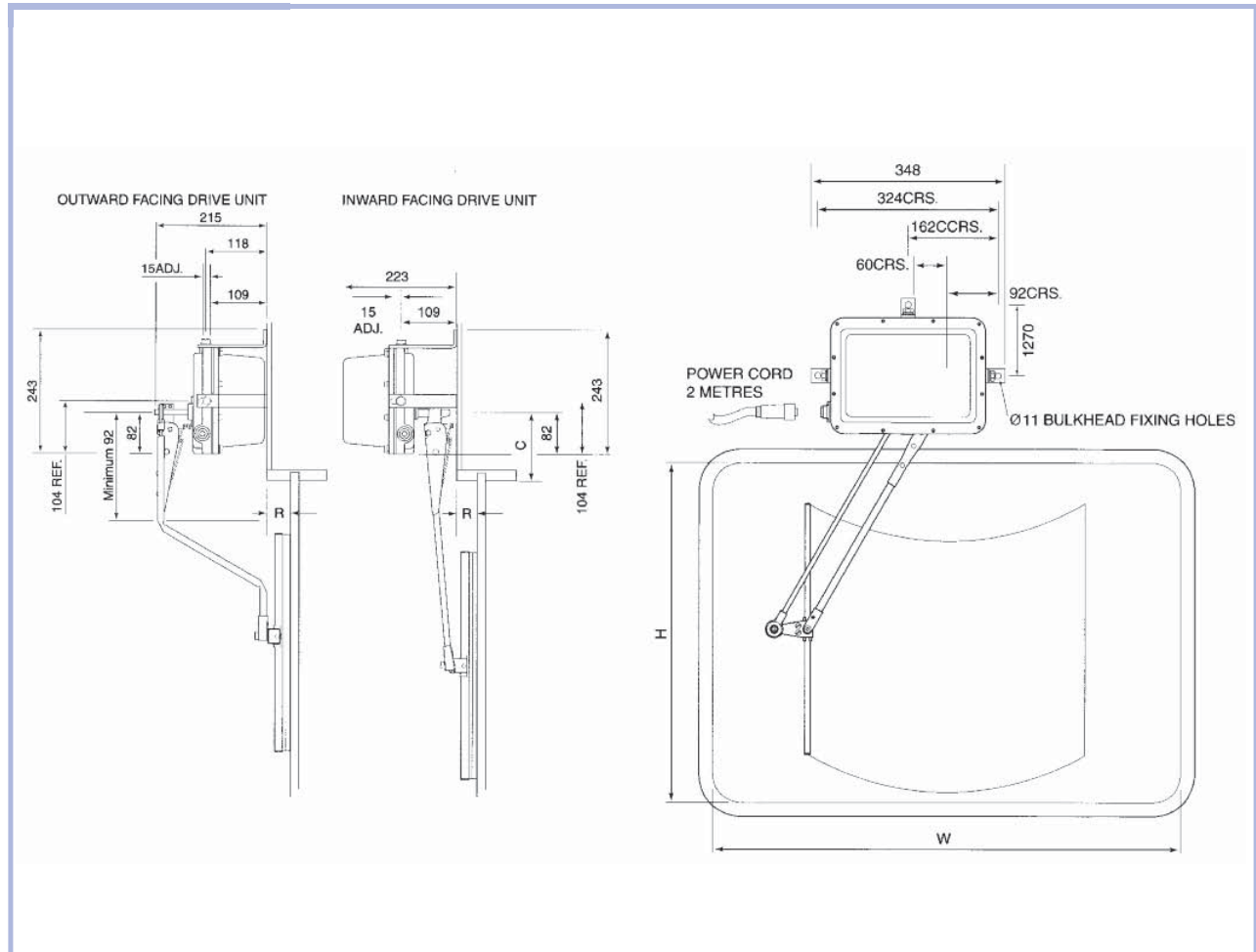
-  Totally enclosed drive unit for safety, reliability and longevity
-  Quick and easy installation - reducing costs
-  2 speed operation with self parking
-  Intermittent wipe available dependant upon selected controller
-  De-icing heaters in arms an option for cold weather operation
-  Spray nozzles available in arms for efficient flow of fresh water
-  Inward facing drive as standard; outward facing drive an option





# Type I850 External Pantograph Wiper

Ideal for heavy duty usage in medium sized applications



## Specifications

|                                |  |
|--------------------------------|--|
| <b>Pantograph wipe arc</b>     | Adjustable from 35° to 90° in 5° increments  |
| <b>Blade lengths</b>           | 300 to 800mm in 50mm increments  |
| <b>Arm lengths</b>             | 300 to 850mm in 50mm increments  |
| <b>Wipe speeds - fast/slow</b> | 50 wipes per minute / 35 wipes per minute, with intermittent and parking   |
| <b>Voltages / Currents</b>     | 12V : 30 amps, 24V : 1.8 amps  |
| <b>Spray nozzles</b>           | Travelling spray nozzles can be incorporated onto the arms (optional)  |
| <b>De-icing heater</b>         | Incorporated into the drive arm, is 100 watts per metre (optional)   |
| <b>Blades</b>                  | Rigid fitted for flat glass as standard. Articulated fitted if for curved glass  |
| <b>Control options</b>         | P/N: 0800-05 2 speed & park, Toggle switch<br>P/N: 0800-02 2 speed, intermittent, park & spray, Rotary switch<br>Series 3000 Control systems, 2 speed, intermittent, park with group operation |

## How to Order

All wipers are custom built to suit your requirements. Please provide your window and installation details to us so that we can recommend the angle of arc, blade, arm and shaft lengths to suit your application.

- 1 Window Dimensions: W x H
- 2 Mounting Distance C
- 3 Dimension R
- 4 Voltage Supply
- 5 Are spray nozzles to be fitted?
- 6 Quantity required



In-Mar Solutions, LLC  
 3011 S. Ruby Ave.  
 Gonzales, LA 70737  
 Ph: (225) 644-7063  
 Fax: (225) 644-7046  
 Email: info@inmarsolutions.com  
 Web: www.inmarsolutions.com